

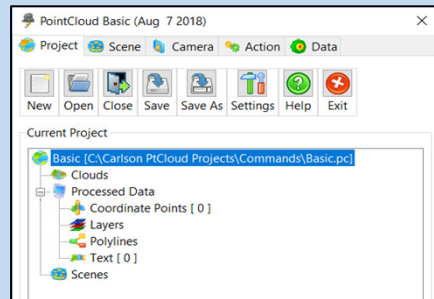
<b>PtCloud Advanced &amp; Basic 2019 Comparison</b>	<b>Carlson PtCloud Advanced 2019</b>	<b>Carlson PtCloud Basic 2019</b>	<b>Carlson PtCloud Advanced &amp; Basic 2019</b>	
<b><u>Primary Users</u></b>	Owners of scanners and drones who need all of PtCloud 2019	Land Surveyors who need to virtual survey with point cloud files	<b>Advanced \$5000</b> <b>Basic \$1750</b>	
<b><u>Point Cloud Setup &amp; Import Cloud</u></b>	<b>All commands</b>	<b>Slightly Different</b>	<b>Slightly Different</b>	
1. PtCloud Files & Folders	Yes	Yes	No difference	
*2. PtCloud Engine Setup: File Formats	Yes	Yes	No difference	
3. PtCloud Advanced and Basic Menus	All commands	Command subset	Slightly Different	
4. Import/Convert cloud(s)	Yes	Yes	No difference	
5. Properties	Yes	Yes	No difference	
6. View > Create Scene	Yes	Yes	No difference	
7. The 10 Views > Create Scene(s)	All commands	Command subset	Slightly Different	
<b><u>Viewing 3D Orbit &amp; Viewing Controls</u></b>	<b>All commands</b>	<b>Same</b>	<b>No difference</b>	
8. 3D Orbit X,Y and Z Mouse Controls	Yes	Yes	No difference	
9. Settings	Yes	Yes	No difference	
<b><u>PtCloud Toolspace Tab Menus</u></b> (Project,Scene,Camera,Action,Data)	<b>All commands</b>	<b>Different</b>	<b>Different</b>	
10. Toolspace Tab Menu Differences - <u>Project and Action</u>	All commands	Command subset	Project and Action 2 of 5 Tabs Different	
<b><u>Project Tab</u></b> (Project(PC),Clouds,Instrument Data,Processed Data,Scenes)	<b>All commands</b>	<b>Different</b>	<b>Different</b>	
11. <u>Clouds</u> Fly-out	Yes	Yes	No difference	
12. Selecting Cloud - Differences (No Draw as Points / No Draw as Object)	All commands	Command subset	Missing commands in Basic Fly-out	
<b>13. <u>Instrument Data (Registration)</u></b>	<b>Yes</b>	No	Basic has no Project Tab Instrument Data	
14. <u>Processed Data</u>	Yes	Command subset	Commands Yes / No in Basic Processed Data	
a. Contours	Yes	No	↓	
b. Coordinate Points	Yes	Yes		
c. Grids	Yes	No		
d. Layers	Yes	Yes		
e. Planes	Yes	No		
f. Polylines	Yes	Yes		
g. Profiles	Yes	No		
h. Sections	Yes	No		
i. Solids	Yes	No		
j. Text	Yes	Yes		
k. TIN's	Yes	No		
15. View > <u>Scenes</u>	Yes	Yes		No difference

Action Tab	All commands	Different	Different
16. Action Advanced and Basic differences	Yes	Yes	No difference
a. Selection Set (Slice & Dice) category	Yes	Yes	No difference
b. Edit category	Yes	Yes	No difference
c. Transform category	Yes	Yes	No difference
d. Create category > <a href="#">Virtual Survey (F2F)</a>	All commands	Command subset	Different
e. Extract category	All commands	No	No Extract items in Basic
f. Command History	Yes	Yes	No difference
<b>Virtual Survey features - Differences in Create &amp; Extract</b>	All commands	Different	Different
d. <a href="#">Create</a> > i. <a href="#">Points (Field-to-Finish)</a>	Yes	Slightly Different	No 3D Solid Symbols
ii. Polyline	Yes	Yes	No difference
iii. Cloud	Yes	Yes	No difference
iv. TIN	Yes	Slightly Different	Basic only stores to TIN
v. Text	Yes	No	Create items not in Basic
vi. Grid	Yes	No	↓
vii. Solid	Yes	No	
vi. Grid	Yes	No	
vii. Solid	Yes	No	
e. <a href="#">Extract</a> > i. Breaklines	Yes	No	No Extract items in Basic
ii. Contours	Yes	No	↓
iii. Profile	Yes	No	
iv. Sections	Yes	No	
v. Bare Earth	Yes	No	
vi. Plane	Yes	No	
vii. Intersection	Yes	No	
viii. Polyline	Yes	No	
ix. Volume	Yes	No	
ix. Volume	Yes	No	
<b>Scene Tab</b>	Yes	Same	No difference
17. Set Cloud Point Size (1 to 10)	Yes	Yes	No difference
18. Regions (Classifications)	Yes	Yes	No difference
<b>19. Action Tab &gt; Create &gt; Points &gt; Survey By Grid</b>	Yes 	Same 	New in both Advanced & Basic 2019

\*Tesseract Carlson Point Cloud Engine: 100% owned and entirely developed in-house by Carlson Software  
3DTK Point Cloud Engine: Developed by freeware consortium of open-source point cloud developers

^ See PDF document detailing similarities and differences between Carlson PtCloud Advanced and Basic 2019 menus

## Carlson PtCloud Basic 2019



## Carlson PtCloud Advanced 2019

